

Plasmid DNA extracted from 6 ml overnight LB culture and eluted in 100 µl buffer.

epENDORF BioPhotometer 6131 21155
12/16/2008 V1.35

18:15 BLANK 0.000 A

Duplicate

Qiagen column
Qiagen solution

18:15 #001	1	0.4483	µg/µL	dsDNA
2+98 µL		0.098	A ₂₃₀	
		0.179	A ₂₆₀	
		0.102	A ₂₈₀	
		0.011	A ₃₂₀	

18:16 #002	2	0.4479	µg/µL	dsDNA
2+98 µL		0.094	A ₂₃₀	
		0.179	A ₂₆₀	
		0.101	A ₂₈₀	
		0.009	A ₃₂₀	

Qiagen column
Favorgen solution

18:16 #003	3	0.4995	µg/µL	dsDNA
2+98 µL		0.093	A ₂₃₀	
		0.200	A ₂₆₀	
		0.108	A ₂₈₀	
		0.000	A ₃₂₀	

18:17 #004	4	0.4890	µg/µL	dsDNA
2+98 µL		0.092	A ₂₃₀	
		0.196	A ₂₆₀	
		0.106	A ₂₈₀	
		0.001	A ₃₂₀	

Favorgen column
Qiagen solution

18:17 #005	5	0.5306	µg/µL	dsDNA
2+98 µL		0.100	A ₂₃₀	
		0.212	A ₂₆₀	
		0.116	A ₂₈₀	
		0.002	A ₃₂₀	

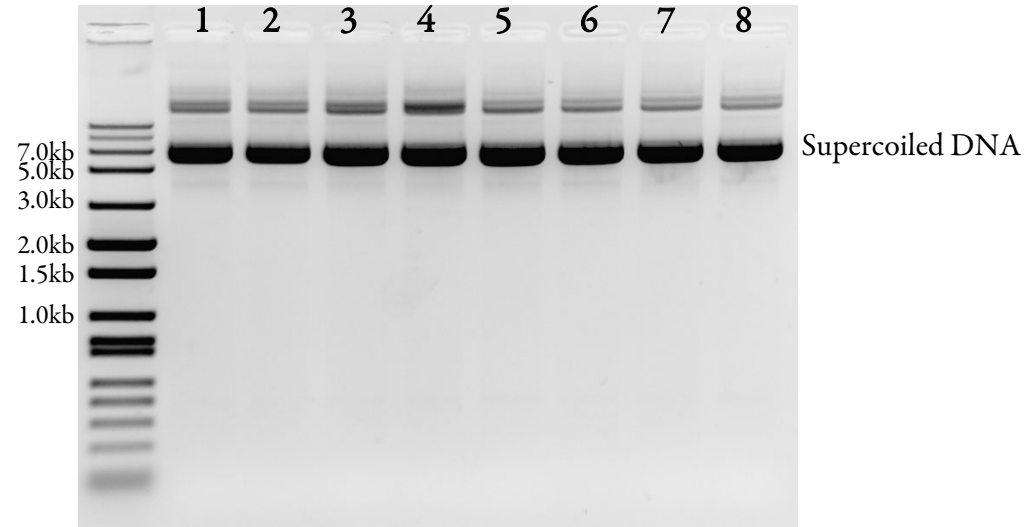
18:18 #006	6	0.4680	µg/µL	dsDNA
2+98 µL		0.089	A ₂₃₀	
		0.187	A ₂₆₀	
		0.103	A ₂₈₀	
		0.003	A ₃₂₀	

Favorgen column
Favorgen solution

18:18 #007	7	0.4583	µg/µL	dsDNA
2+98 µL		0.089	A ₂₃₀	
		0.183	A ₂₆₀	
		0.100	A ₂₈₀	
		0.001	A ₃₂₀	

18:18 #008	8	0.4383	µg/µL	dsDNA
2+98 µL		0.085	A ₂₃₀	
		0.175	A ₂₆₀	
		0.096	A ₂₈₀	
		0.000	A ₃₂₀	

1 µl uncut plasmid DNA (8771bp)



1 µl plasmid DNA treated with BamH I + Sac I

